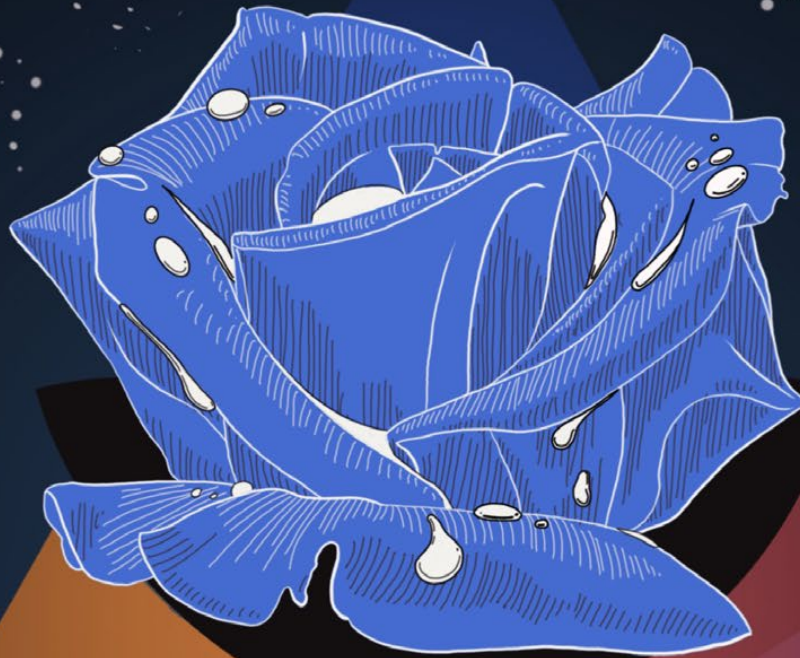


The Evolving Astrologer



SATURN *IN* PISCES

plus PLANTS
& PLANETS

V32 01 MARCH EQUINOX
2023

THE ORGANIZATION FOR
PROFESSIONAL ASTROLOGY **opa**

SATURN IN PISCES

PLANTS & PLANETS

Lead Editor: William Sebrans

Senior Editor: Denise Hancock

Design: Sara Fisk

Cover Art: Ava Astrología, see p.62

© 2023 OPA All rights reserved. No part of this publication may be reproduced without the written consent of OPA, unless by the authors of the articles themselves.

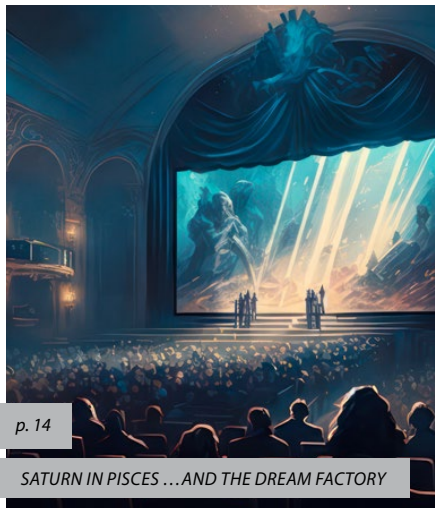
CC IMAGE LICENSES
<https://creativecommons.org/licenses/by/4.0/>

DISCLAIMER: While OPA provides a platform for articles to appear in this publication, the content and ideas are not necessarily reflecting OPA's points of view. Each author is responsible for the content of their articles.

opa

The Organization for Professional Astrology

OPAastrology.org



p. 14

SATURN IN PISCES ...AND THE DREAM FACTORY

Features

OPA Live

- 9 Introduction
- 10 SATURN IN PISCES
The Undiscovered Country
Giulio Pellegrini
- 14 SATURN IN PISCES
...and the Dream Factory
Gina Piccalo
- 20 BITTER TEARS: Saturn In Pisces
Wendy Stacey
- 24 THE SATURN IN PISCES
CONUNDRUM
Mallory Hasty

Columns

- 90 TRANSITS OF THE SEASON
Denise Hancock, PhD



p. 90

TRANSITS OF THE SEASON

Plants & Planets

- 36 THE 12 HEALERS
Kira Sutherland
- 40 PLANTS AS ALLIES,
ASTROLOGERS AS GUIDES
Sue Morris
- 44 THE HARMONY OF THE
CELESTIAL & TERRESTRIAL
WANDERERS
Cameron Allen

Articles

- 30 YVES SAINT LAURENT
Fashioning Fantasy Into Reality
Shane M. Nygaard
- 48 ASTROLOGICAL HOUSE DIVISION
Rhys Redmond Chatham
- 58 THE PERSONAL LUNAR CYCLE
Aureal Williams
- 64 THE ASTROLOGY OF SHAME
When You're Not Good Enough
Andrea Conlon



p. 44

CELESTIAL & TERRESTRIAL WANDERERS



p. 20

BITTER TEARS: SATURN IN PISCES



p. 48

ASTROLOGICAL HOUSE DIVISION



p. 58

THE PERSONAL LUNAR CYCLE

70 PLUTO IN AQUARIUS Finding Your Muchness

Georgina Sierra

74 THE US PLUTO RETURN AND COVID-19 FROM AN EVOLUTIONARY PERSPECTIVE

Diane Trimbath

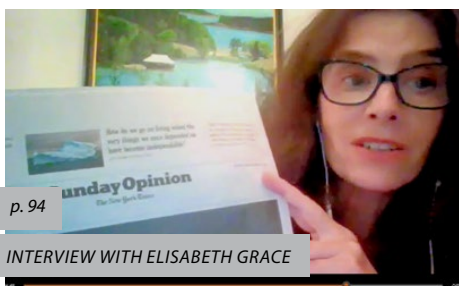
80 BLENDING RELATIONSHIP CHARTS AND THE "PART OF UNION" PART 2

Amir Bey



p. 74

THE US PLUTO RETURN AND COVID-19



p. 94

INTERVIEW WITH ELISABETH GRACE

Horary Corner

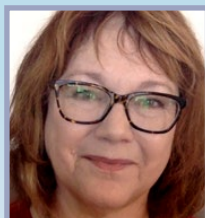
86 TWO QUESTIONS IN ONE HORARY: Will the Pain Go Away and Will I climb up a level professionally?

Tanja Ristovski

More

68 BOOK REVIEWS

94 INTERVIEW WITH ELISABETH GRACE



Dear OPA Members

Grey skies. A lull before the storm.

As I write this, the "Pineapple Express" is on its way to sunny California, already swimming in floodwaters and buried in unrelenting snow. Most of us are experiencing unique weather as we surf the unpredictable in all of life, astrology transits guiding our way.

For me, the personal unpredictable was that I finally succumbed to the Covid virus this past week. I dared to meet my astrologer bud, Linea Van Horn, for our first in-person lunch since "Pre-Pandemic," the great marker of time. Two days later, literally hours after Saturn moved into Pisces, we both tested positive. Even though I have endless faith in astrology, I still find it remarkable that the last time I was seriously ill was when Saturn was last in Pisces in the 90s. I am grateful that I am generally healthy, and respectful of Saturn's ability to slow me down.

Many of my friends reported a spiritual, transformational quality to their experience of intense bouts of Covid. Even with a relatively mild case, the fatigue feels like living in a cloud where only fundamental life-sustaining needs get a vote. Every day is a reminder to find balance. My inner imperative to accomplish is dull and muted. This morning, I found myself readily stopping everything to hold my trembling Coyote dog, who freaked at the squeak of the battery alarm. I frequently rest, pondering the ceiling.

This need to be balanced and take care of the physical body has been astrologically hammered into our collective psyche through the Taurus North Node and Uranus in Taurus transits, and soon will be a needed balance for Pluto in Aquarius. As Pluto's ingress always suggests the curriculum — *What is corrupt? What needs to be transformed?* — our inability to wisely handle even the current levels of technology will be brought to our attention. The wave of tech innovation likely to flood us in the upcoming decades promises to be both magnificent and overwhelming. We can imagine and project all we like, but the truth is we don't know what it will feel like to live within this new terrain. The next few months provide a brief immersion, from which we can return to Capricorn tried and true to stabilize before we are fully in the new.

I believe the simple, human pleasures of life will help us find balance and manage unimaginable world changes: delicious and nutritious food, personal connections, tending to the earth, and simplicity come to mind. Our June issue will feature these healing themes.

For now, and for me, the necessary human connection comes from our astrological community. I appreciate the connection and memories I have with you, and hope that the array of astrological wisdom we share helps you find inspiration, grace, and balance.

In gratitude,
Kay

PRESIDENT'S REPORT





THE US PLUTO RETURN AND COVID-19

FROM AN EVOLUTIONARY PERSPECTIVE

by Diane Trimbath

As Pluto leaves Capricorn in Nov 2024, the USA Pluto return will wrap up its 248-year cycle. As a result, the United States of America could undergo profound changes in its national identity as it releases deep-rooted traditions of the past.

Revolutionary ideas will likely involve partnerships to address the global management of disrupted environmental, economic, and capitalistic structures. In the aftermath of the COVID-19 Pandemic and the USA Pluto return, we may begin to see new forms of intercontinental diplomacy develop. Over the last three years, the global breakdown of capitalism has increased awareness of the importance of protecting natural resources within each nation.

The Big Picture

Pluto and Neptune are the two outermost planets in our known solar system and define the 'big picture' of the lessons in store for humanity regarding our evolution. Key placements in the charts of the USA (Sibly), the New York stock market, and the first COVID-19 case directly link in and align with the Neptune/Pluto Great Conjunction of Aug 2, 1891. These three events activated the expression of the Great Conjunction story, triggered by Pluto transiting through Capricorn.

The intensity of the USA Pluto return, the unpredictability of the stock market, and the chaotic state of global affairs post-COVID-19 are extreme expressions of great

social transitions within our society. Each offers key 'wake-up calls' on their own, yet the combined breakdowns initiate a shift in human consciousness across the planet. A united transformation of **emotional (in) security is emerging** as we gain a greater understanding of our world's physical and environmental laws.

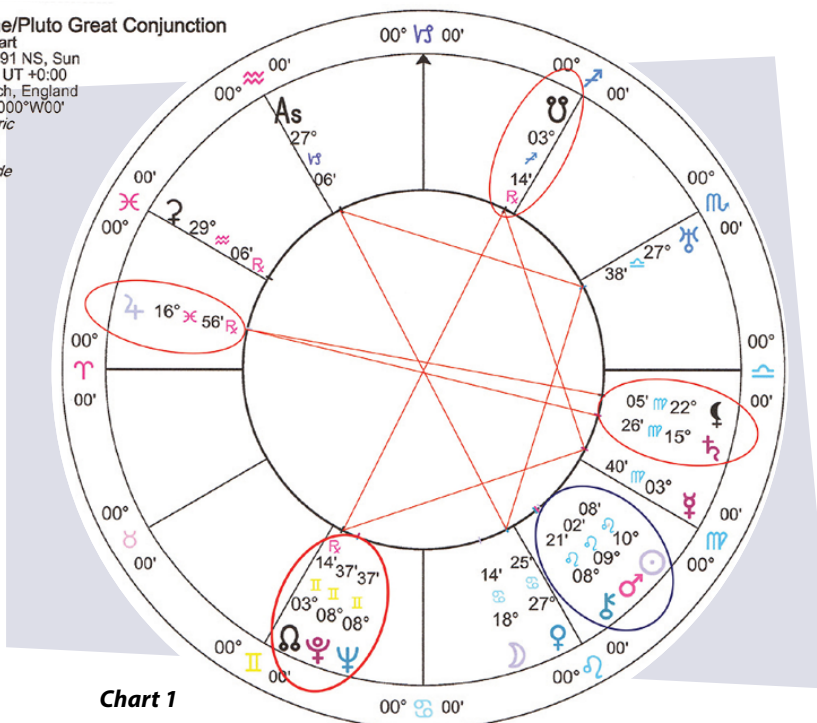
The Neptune/Pluto Cycle

The Neptune/Pluto Great Conjunction marks a cultural turning point on Earth every 492 years. Throughout the cycle, the collective psyche of humanity, spirituality, and reverence for life ascends to a higher level of conscious understanding. Our current cycle began at 8° Gemini 37' on August 2, 1891 (see chart 1).

This conjunction in Gemini, involving the Moon's Nodes across the 3rd and 9th Houses, announced a new collective learning age. Our understanding of the environment in which we live is the focus. Global communications, travel, transit, and commerce will likely suffer survival issues, power struggles, and major shifts in attitude before the cycle completes.

The **Neptune-Pluto** conjunction was in a mutable grand square with **Mercury, Saturn, and Jupiter**. This aspect pattern

Neptune/Pluto Great Conjunction
Natal Chart
Aug 2 1891 NS, Sun
7:06 pm UT +0:00
Greenwich, England
51°N29' 00°W00'
Geocentric
Tropical
0° Aries
True Node



suggests we will likely need to overcome great obstacles, to broaden our understanding of environmental and social consequences, as we explore and evolve our footprint on Earth. By the time the cycle completes, we may establish a united system of management to protect the people and the planet.

Significant Events of the 1890s

The 1890s heralded breakthroughs in science, technology, and communications. It was a period of stimulating new relations, managing land and transit reforms to increase the nation's productivity from coast to coast, and addressing the challenges that progress created. See the cardinal T-square in chart 1, involving **Uranus** in the 7th House, **Venus** in the 4th House, and the **Ascendant (ASC)** in the 10th House.

Pluto rules the masses and demands evolutionary growth. **Neptune** dissolves barriers and invokes new vision. In the 1890s, we began to see the establishment of national parks, breeding animals through *in vitro* fertilization, effective treatments against agricultural diseases, and new developments in anti-toxins to immunize people and animals.

Early computers tabulated census records as the population grew, the development of radio replaced the telegraph, and the telephone facilitated quick, person-to-person communication. The invention of television followed in 1927, becoming the dominant form of mass communication over vast distances.¹

Nikola Tesla invented the alternating-current power system that provided electricity for homes, buildings, and machines. He also pioneered new technology fields using wireless transmission, remote control, hydroelectric power, magnetic fields, electric motors, laser, x-rays, robotics, turbines, and more.

The 1890s marked the end of the Reconstruction Era within the USA (1861 to 1900), as the country struggled to integrate millions of newly freed African Americans into social, political, and labor systems.² The Gilded Age (1877-1900) saw rapid economic growth in the USA, and industrialization demanded an ever-increasing labor force. As a result, an influx of millions of Europeans came to address labor shortages in the railroad, factory, farming, ranching, and mining industries. Public schools at the elementary and high school levels were established.³

Until the mid-19th century, no global time system existed. Due to the expansion of railway and communication networks, Greenwich Mean Time (GMT) became Britain's legal standard in 1880. The USA also chose Greenwich as its national time zone system, and 72% of the world's commerce used Greenwich as the Prime Meridian. Therefore,

from 1884, Greenwich became the center of world time, regulating time zones globally.⁴

The United States of America

Cast the 1891 **Neptune/Pluto Great Conjunction** chart for Greenwich, England, and something interesting occurs. The **Ascendant (ASC)** falls at **27°Capricorn 06'** (see chart 2). Ironically, this is the degree of the USA natal **Pluto** at **27° Capricorn 32'** (see chart 3).

In Sibly's USA inception chart, **Pluto** is located in the 2nd House. Pluto defines the point where the nation's 'known power'

is demonstrated at home and in the world. It also identifies the country's basic security needs. Therefore, the self-preservation of the country requires responsible and fair management of the people's security and collective 'mass' wealth.

As the USA matures, focusing on democratic growth and international diplomacy in business ventures, its global leadership has been determined by its success in capitalism and economic status. By the early 20th century, the USA had become the world's powerhouse, maintaining self-sufficiency by partnering with foreign nations

Neptune/Pluto Great Conjunction

Natal Chart
Aug 2 1891 NS, Sun
7:06 pm GMT +0:00
Greenwich, England
51°N29' 000"W00'
Geocentric
Tropical
Placidus
True Node

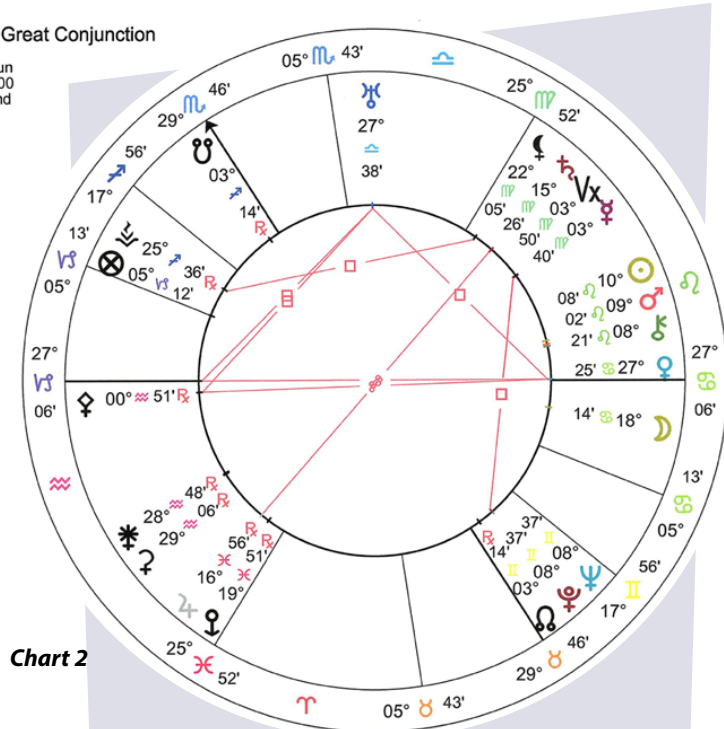


Chart 2

US Sibly Chart
Natal Chart
Jul 4 1776 NS, Thu
5:10 pm LMT +5:00:39
Philadelphia, PA
39°N57'08" 075°W09'51"
Geocentric
Tropical
Placidus
True Node

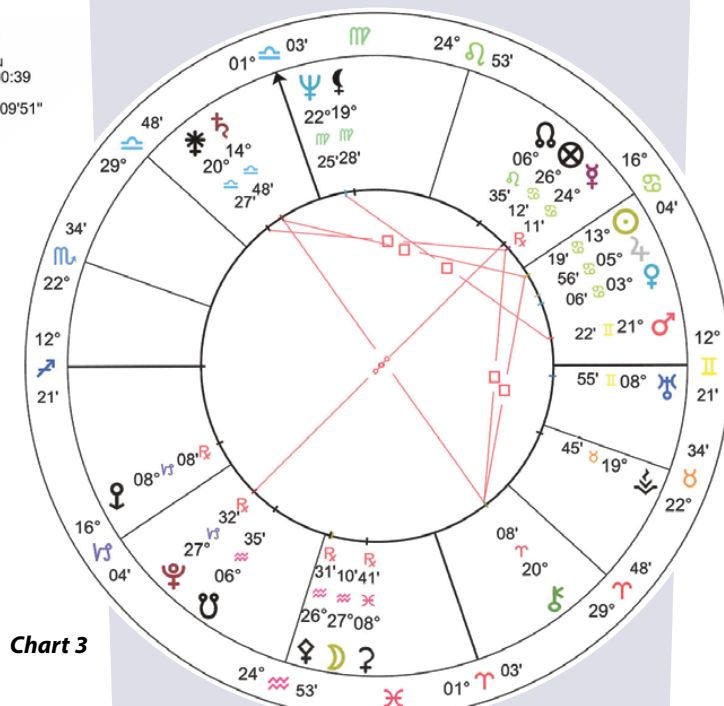


Chart 3

US PLUTO RETURN AND COVID-19

and becoming the #1 global producer in gross domestic product.

Paradoxically, this placement also shows where the USA is most vulnerable. During this Pluto return, the USA has been struggling with economic self-sustainability. Maintaining protection over the mass wealth of the people, honoring all monied contracts with allies, and operating a fair system of justice are essential challenges.

As of 2022, we are witnessing instability and division, involving standards of democracy, the country's ability to govern, the allegiance of the people, and the maintenance of the wealth, labor, and resources required to run the country efficiently. These issues unravel the ideology upon which the nation was founded.

Reflecting on the COVID-19 Pandemic

Over the last 132 years since 1891, we have had rapid global population growth, and a blending of ideologies, cultures, geographical origins, and species. This has stressed health conditions worldwide for years, and we have felt an imbalance of available resources. Increased travel, human-animal interactions, expansion of cities, and extended trade territories

have created global interdependence. This has brought health, labor, sanitation, and military challenges to the forefront. The emergence and spread of infectious diseases became a key challenge to resolve.

Pluto purges deep-rooted problems that can only be understood through collective pressures. **Neptune** tends to bring loss, grief, or sacrifice—on a personal or collective level—to slowly reveal planetary consciousness.

The last **Pluto/Saturn Great Conjunction** occurred on Jan. 12, 2020, at **22° Capricorn** and prefaced the USA Pluto return. This conjunction heralded final endings, extreme changes within structures defining reality, and psychological unrest.

The first COVID-19 case was reported in Wuhan, China on Dec 1, 2019. The first case in the USA was reported on Jan. 20, 2020, and the USA declared a public health emergency on Jan 31, 2020.

The virus began to spread rapidly across the planet in 2019, mutate, and continues today. Attributes of the virus follow the theme of the **Neptune/Pluto Great Conjunction in Gemini**:

- A viral infectious disease
- Attacks the lungs
- Highly contagious
- Transmitted via airborne secretions or by touching infected objects

The chart of the first COVID-19 case fits like a glove into the **Neptune/Pluto conjunction** chart, triggering the storyline (see chart 4):

AWARENESS: The announcement and empowerment of a toxic airborne disease were represented by transiting **Sun/Pallas** (8°Sag 38°/9° Sag 46') in the COVID-19 case chart opposing the **Neptune/Pluto** conjunction (8° Gemini 37').

A TRIPLE YOD, Great Finger of God or Fate: A radical point of view dealing with crisis management, control, and responsibility of life and death situations. This aspect pattern involves ten planetary points between the two charts: **N. Node/Pluto/Neptune** (3°, 8° Gemini in 4th House) and **Chiron/Mars/Sun** (8°, 9°, 10° Leo in 7th House) indicate the Conjunction offers a unique spiritual assignment that must be faced to evolve. **Ceres/Venus/S. Node** (5°, 6°, 8° Capricorn in 12th House of loss) opposing the **N. Node** (8° Cancer in 6th House of health) points to the birth of the pandemic.

REORIENTATION: Domestic and professional constraints, emotional depres-

Inner Wheel
Neptune/Pluto Great Conjunction
Natal Chart
Aug 2 1891 NS, Sun
7:06 pm GMT +0:00
Greenwich, England
51°N29' 00"W00'
Geocentric
Tropical
Placidus
True Node

Outer Wheel
First COVID-19 Case Reported
Natal Chart
Dec 1 2019, Sun
11:45 am AWST -8:00
Wuhan, China
30°N36' 114°E17'
Geocentric
Tropical
Sun on 1st
True Node

Chart 4

sion, broken relations, and alienation from others requiring lifestyle changes are indicated: **Saturn/Pluto** (17°, 21° Capricorn in 12th House of isolation) in the COVID-19 Chart opposed by **Moon** (18° Cancer, 6th House of routines) in the conjunction chart symbolizes isolation for the emotional health and safety of the people.

The intensity of the pandemic was not only due to the timing of alignments between the two charts but also to the declinations, measured as the distance between a planet's latitude and the Celestial Equator. Planets in parallel (same declination) act as a conjunction and are greatly amplified. Over the course of three years (2019-2022), four malefic planetary points remained parallel within the range of 20°- 23°S, with **Jupiter** added in the mix **to expand and emblazon the message upon the Earth.**⁵ *We have not even begun to understand the long-ranging ramifications of COVID-19 and its influence over the evolution of mankind.*

USA Pluto Return

As the USA completes its **Pluto return** (27° **Capricorn**)⁷, capitalistic structures that have been deemed 'false, abusive, or tyrannical' have been in the news. Civil demonstrations, changes in public loyal-

ty, and militia groups bearing arms have provided insight into citizens' psychological imbalances. Pluto is demanding a reassessment of the USA's social and moral values.

Internal pressures could further breakdown established laws and institutions lacking integrity. Pluto demands a major shift in authority and bureaucracy.

Economic challenges and shortages could occur, due to the mismanagement of resources. The result could be the ignition of a worldwide recession or an altered perception of global environmental health. Either way, an ideological transformation of the USA's leadership is in store.

Internal security is a must for any country to survive. The Pluto return may require the USA to lose prestige or social position to regain sight of 'who they are', and to rebuild the internal strength and emotional foundation of all within it.⁸

Internal pressures could
further breakdown
established laws and
institutions lacking
integrity. Pluto demands
a major shift in authority
and bureaucracy.

Ideological and Political Revolution:

Pluto will briefly transit into **Aquarius** starting March 2023, ushering in a collective and philosophical rebirth and great social change. This may require a demonstration of broader acceptance, tolerance, and encouragement of differing beliefs, customs, and social norms. By beginning to create change in cultural standards to ensure the country's survival, past values in ideologies underpinning USA will begin to fade away.

The USA is key to unlocking lessons buried within the current Neptune/Pluto cycle.

Several partile aspects to the **Neptune/Pluto Great Conjunction** are triggered by the USA **Pluto return**.

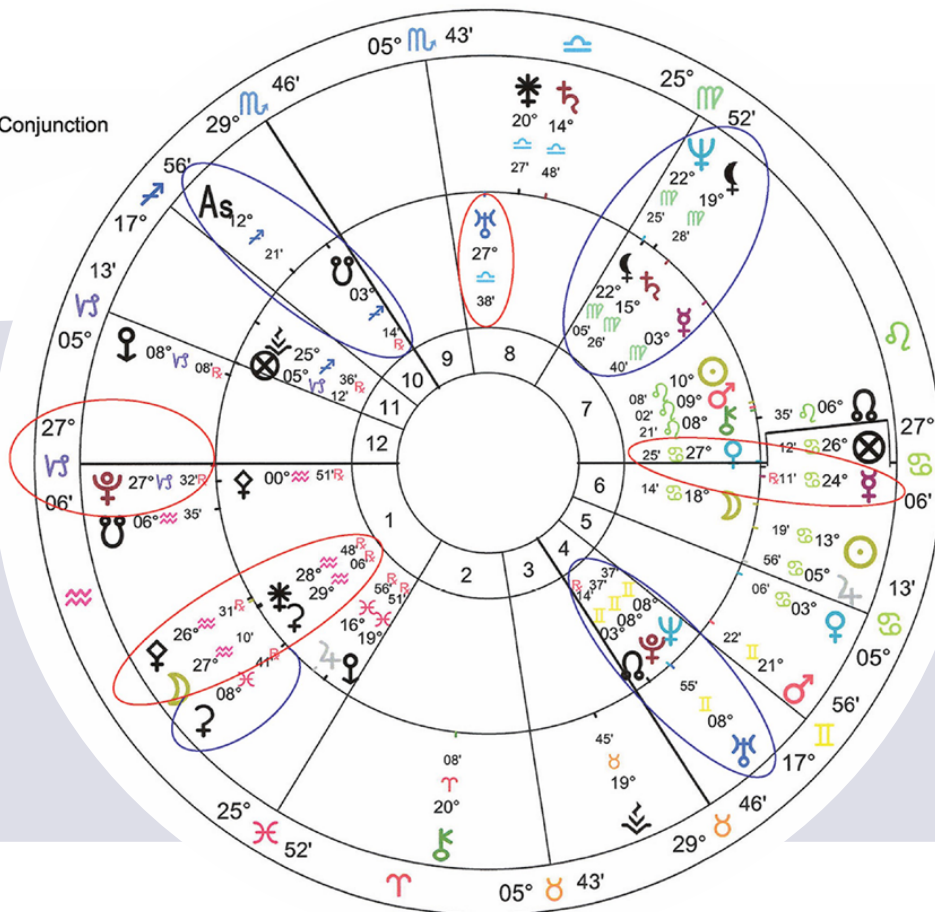
Since the USA Pluto conjoins the Conjunction ASC, **the Pluto Return is 'a fundamental trigger' to the T-square energy and expression of this Neptune/Pluto cycle** (see chart 5, following page). The T-square creates relationship pressures at home and abroad. This tension has created unexpected apathy and a lack of loyalty within the labor force and supply chains, great tension in personal relationships, and volatile performance in business and stock markets. Transiting Pluto (27° Capricorn) has been and will continue to square the natal **Uranus** (27° Libra, 8th H) and oppose



US PLUTO RETURN AND COVID-19

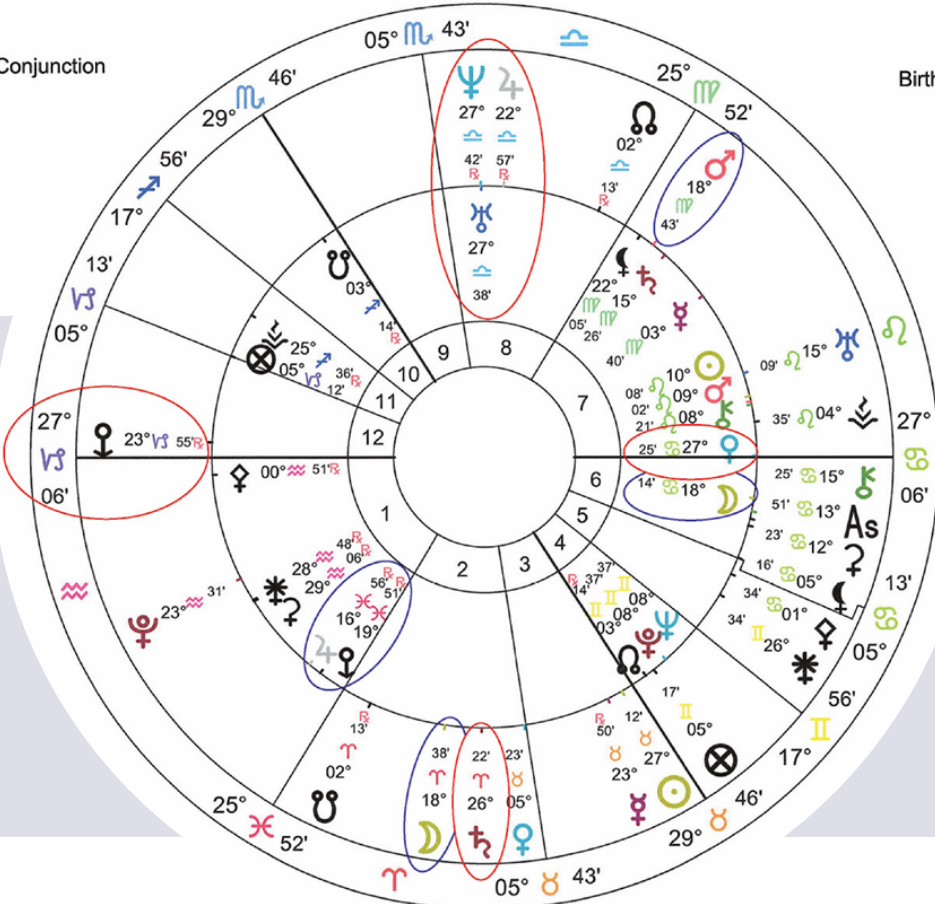
Inner Wheel
Neptune/Pluto Great Conjunction
Natal Chart
Aug 2 1891 NS, Sun
7:06 pm GMT +0:00
Greenwich, England
51°N29' 00°W00'
Geocentric
Tropical
Placidus
True Node

Outer Wheel
US Sibly Chart
Natal Chart
Jul 4 1776 NS, Thu
5:10 pm LMT +5:00:39
Philadelphia, PA
39°N57'08" 075°W09'51"
Geocentric
Tropical
Placidus
True Node



Inner Wheel
Neptune/Pluto Great Conjunction
Natal Chart
Aug 2 1891 NS, Sun
7:06 pm GMT +0:00
Greenwich, England
51°N29' 00°W00'
Geocentric
Tropical
Placidus
True Node

Outer Wheel
Birth of NY Stock Market
Natal Chart
May 17 1792 NS, Thu
7:52 am LMT +4:56:02
New York, NY
40°N42'51" 074°W00'23"
Geocentric
Tropical
Placidus
True Node



the natal **Venus** (27° Cancer, 7th H) in the conjunction chart throughout Oct 2023.

Significant dates to watch are May 4-8, 2023, when transiting **Jupiter** will expand the T-square tension at **27° Aries** (in the 2nd House of the Conjunction chart), bringing great change in sustainable value (for better or for worse).

During the same four days, **Mars** will travel to **20-22° Cancer** to oppose and trigger the **Saturn/Pluto conjunction (22° Capricorn)** and conjoin the lunar eclipse point from Jan 10-12, 2020 (**20° Cancer**). Powerful events directly linked to the COVID-19 pandemic may offer insight into the bigger picture or aftereffects.

Pay attention to 8° Gemini

The current **Neptune/Pluto** cycle began with a conjunction at **8° Gemini 37'** on August 2, 1891. Therefore, 8° Gemini marks the underlying purpose, the story in development, and a doorway through which a conscious understanding of 'the lesson' will be revealed.

The USA natal Uranus (8° Gemini 55') is conjunct this 8° sensitive point and therefore will be a messenger to awaken, announce and unfold the 'theme' of this Neptune/Pluto cycle in the world. The recent Mars retrograde cycle has revolved around the 8°08' Gemini location (Sept 4, 2022 – Mar 15, 2023). As a result of this redirection, we should expect critical changes in homes, land or base operations (4th House in Conjunction chart), again to be challenged in July 2023.

The USA and the world could encounter great environmental and social challenges, involving turbulent weather, earthquakes, chemical or toxic waste, mass shootings, or mismanagement of data, transit, or commerce to create disruption to the balance of global relations.

We also find a Yod marked by 8° when we combine these two charts. This Yod may indicate hidden burdens involving authorities that may hide a threat of danger to the security, personal health and well-being of the public. [USA Sibly **Eris** 8° Capricorn (12th House) and **Ceres** 8° Pisces (1st

House) of the US Sibly and Neptune/Pluto's **Chiron/Mars/Sun** 8°-10° Leo (7th House)]

New York Stock Exchange

As **Pluto** leaves **Capricorn**, the USA's Gross Domestic Product and stock market are undergoing massive changes and the Russia/Ukraine war has disrupted global supply chains. In 2022, the USA Federal Reserve Bank raised interest rates seven times to curtail climbing inflation, reaching an all-time high of 9.1%. The stock markets took a beating in 2022 as all three major indices had the biggest decline since 2008 (when Pluto entered Capricorn). As we head into 2023, a possible impending global recession, deep depression, or market crash hangs in the air. (see chart 6).

Pluto at 27° Capricorn ignites the US Pluto return and the bi-wheel chart (previous page) of the Birth of the NY Stock Market around the Great Neptune/Pluto Conjunction as well. Pluto triggers a grand cardinal square of great tension. The Jupiter/Neptune (22°, 27° Libra 8th H) opposition to Saturn (26° Aries 2nd H) of the NY Stock Market links directly into the existing angular T-square involving transiting Pluto (27° Cap ASC), natal Uranus (27° Lib 8th H) and natal Venus (27° Can 7th H) of the Grand Conjunction.

This **Neptune/Jupiter to Saturn opposition** creates a radical influence, stressing the protection of past profits of public stocks, a "magical illusion" of financial stability, health, wealth, and security of trade contracts. Unrealistic attitudes and swings in public opinion may set the market up for a fall. As 27° Capricorn Pluto triggers this, "The days are over to just be in the stock market to make money. Investors must watch carefully for sector changes and make smart stock picks."⁹ This is a very volatile time.

Conclusion

Although extremely painful, the USA Pluto return and the COVID-19 global pandemic clearly express the Neptune/Pluto Great Conjunction evolutionary theme, awakening a renaissance in our collective human soul.

We have passed the opposition point of this 492-year cycle (Pluto 8° Sag 37'), and are approaching the disseminating trine in 2028 (Pluto 8° Aqu 37') when we begin to absorb the greater message of this cycle. The closing square will occur in 2050, 27 years from now (Pluto 8° Pis 37').

The 492-year cycle completes in 2385, only to begin anew, again in Gemini (12°). Each Neptune/Pluto cycle will continue to occur in the sign of Gemini for 3,942 years (1398-5340), ushering in major epochs in

the understanding and development of civilization.⁹

The challenges in today's world—marked by extreme economic and health crises—bring an acute awareness of how interconnected we all are. We share the same Earth, depend on the same fertile resources of her land, and breathe the same air. If this balance is disrupted, we will all suffer, if not extinguish life altogether. Is this the lesson we are to learn by 2385?

COVID-19 heightened the realization and need for intercontinental diplomacy to develop partnerships in addressing global management for the health and well-being of the people. Will additional future events bring a realization of the need to establish a united system of management via science, technology, and communications to protect the fertility of resources, as well as our planet Earth itself?

REFERENCES

1. 1890 in science: https://en.wikipedia.org/wiki/1890_in_science
2. Reconstruction Era, National Historical Park South Carolina - <https://www.nps.gov/reer/learn/history/culture/historyculture.htm>
3. The Gilded Age, https://en.wikipedia.org/wiki/Gilded_Age
4. What is Greenwich Mean Time, Royal Museums Greenwich, <https://www.rmg.co.uk/stories/topics/greenwich-mean-time-gmt>
5. **Pluto/S.Node – parallel at (22°-20° s) 3 yrs!**
Jan'19-Dec'21 Jupiter/Saturn/Pluto/S.Node (21-23°s) parallel Jan'19-Jan'20 Mars/Jupiter/Saturn/Pluto/S.Node (20-23°s) Jan-Apr'20 Jupiter/Saturn/Pluto/S.Node (20-23°s) May'20-Jan'21
6. Diane Trimboth, USA Pluto Return – 1776 – 2022: An Ideological and Political Revolution, NCGR Syzygy Research Journal, Volume Winter 2022
7. Jeff Green, Pluto The Evolutionary Journey of the Soul
8. Gross Domestic Product, Fourth Quarter and Year 2022 (Advance Estimate) <https://www.bea.gov/news/2023/gross-domestic-product-fourth-quarter-and-year-2022-advance-estimate>
9. Diane Trimboth, Independent Research using Solar Fire Software.

Diane Trimboth, Astrologer C.A., NCGR-PAA Astrologer, Lecturer, Teacher, Graphic Design Professional. Diane is a professional Astrologer in Cleveland, Ohio and holds a Level IV Certification through the National Council for Geocosmic Research (NCGR). She has been teaching 'An Astrological Look Ahead Monthly Series' at the IAA International Academy of Astrology, and 'Planetary Highlights Program', offered through Lake County Astrological Association (LCAA). Diane is President of LCAA Board in Willoughby Hills, OH and has been an invited speaker for LCAA, GLAC (Great Lakes Astrology Conference), NCGR, OPA, and TAG (The Astrology Gathering) astrological events. She holds a Bachelor of Fine Arts in Graphic Design from Kent State University, and has been founder and creative director of a business marketing communications firm in Cleveland, Ohio since 1989.

The stock markets took a beating in 2022 as all three major indices had the biggest decline since 2008 (when Pluto entered Capricorn).