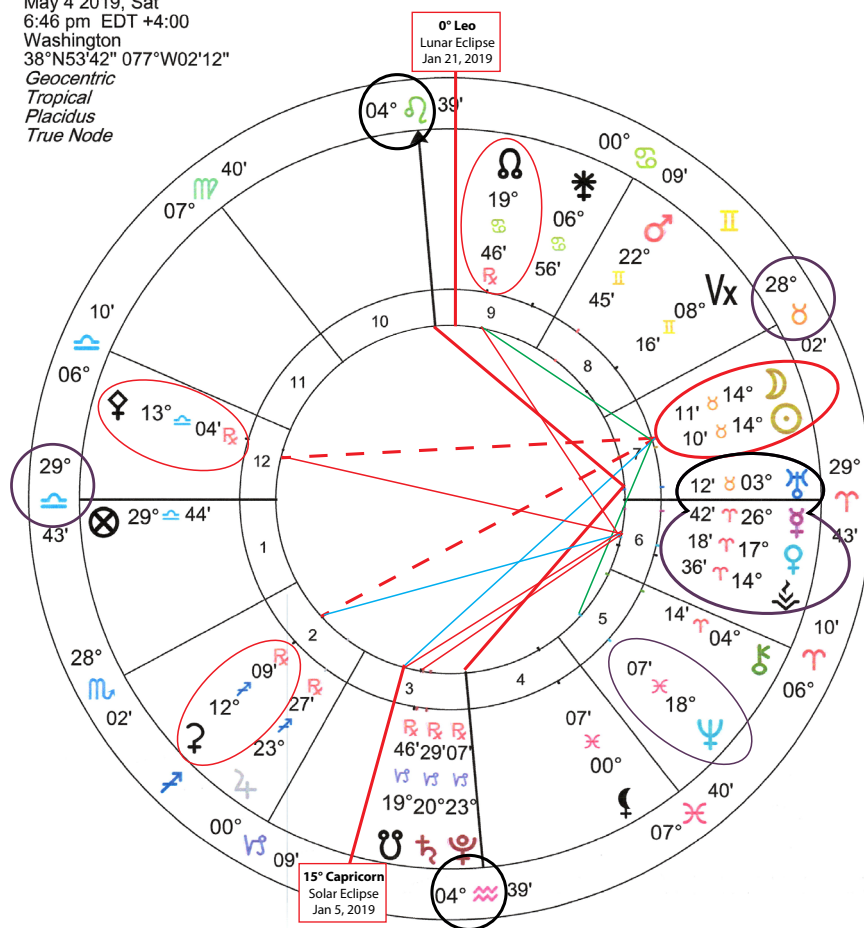


New Moon in Aries

May 4th, 2019 – 14° Taurus (6:46 pm)

New Moon – May 2019

Natal Chart
May 4 2019, Sat
6:46 pm EDT +4:00
Washington
38°N53'42" 077°W02'12"
Geocentric
Tropical
Placidus
True Node



New experiences initiated encouraging you to **stabilize** your material security, through self-acquired wealth, loyalty, love or productivity with committed partnerships.

- Changes in agreements or partners bringing in new or releasing old, to suit 'limited budgets' and desired 'actions' to suit partner.
- Unexpected growth, public goals or action on commitments from the past, test your authority with communication responsibilities.
- Loss of 'controlled power' within communications, commerce or local travel – within private life, the home, or base operation.
- Stress–mastery within community or new groups put on hold due to unpredictable daily needs or promotion of partners' agenda.
- Peers may require you attention, due to limited information, facts, details. You may not understand the magnitude of daily obligations – or have the capacity or expertise required.
- New social relations challenge ability to pursue personal goals this month. Personal empowerment adjustments are required. Take action to let go of co-dependent relationships
- Personal reorientation – changing daily practice of jumping to other's requests, self-sabotaging actions to be 'valued' by others
- Build mastery of personal leadership - involving public service to others - get back in control of own authority and hearts desire – strengthen emotional and philosophical security, based upon familial and personal happiness.

First Quarter Moon in Leo

May 11, 2019 – 21° Leo – square SU 21° Taurus



USA
10th House:

After an unconscious desire for a **'valued' relationship** was initiated **The 'need' is secured and growth begins, by tearing down old structures and beginning to build new ones.**

- Protecting professional reputation via your creative self-expression, speculation, investments, hobbies. Could involve your loved ones, children or visionary projects.
- Appreciation for, loyalty to, or remembrance of the past.
- A focus on giving and receiving in career, generosity, honorable leadership and/or dramatic performance .

Action.

To a situation that started on May 4th, 2019 – New Moon- (14° Taurus)

Empowerment through a challenge or crisis. Taking action to channel and resolve the building blocks that stand in your way, to accomplish your mission.

Fulfillment

- Security is found through **self-expression.**
- In a nurturing, feeling or an fun-loving way
- Stabilizing self-actualization and soul action opportunities
- Dignified, courageous and protective loving instincts to a situation
- Entertainment/relaxation.

Challenges

- **Prideful, selfish** or stubborn behavior
- **Arrogant or patronizing** emotional outbursts.
- Over emotional, **'childish.'**
- Over-protective of loved ones; **possessive.**
- Doubts own creative abilities; **afraid to let go of the past.**

Full Moon in Scorpio

May 18, 2019 – 27° Scorpio – oppose SU 27° Taurus



US 1st House – oppose 7th House

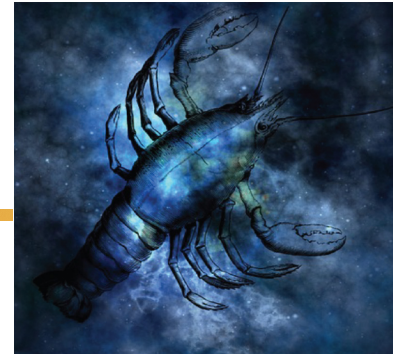
As the moon increases in light,
an understanding culminates at the Full Moon.

Full conscious awareness comes to light
ie: the enlightenment of a 'previous unconscious'
situation (possibly through an opposition).

Illumination.

To a situation that started on
May 4th, 2019 – New Moon- (14° Taurus)

Powerful personal fulfillment or 'cold' opposition from
others; stabilizing emotional and psychological security
with 'self', through deep involvements and/or intense
transformations involving other people's resources.



Fulfillment

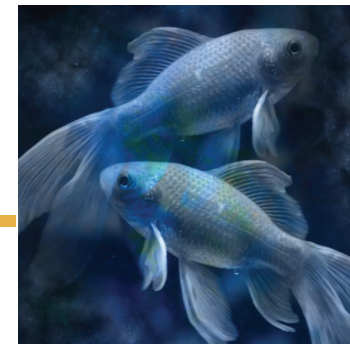
- Security is found through emotional intimacy.
- Probing, mysterious, or intuitive actions.
- Regenerating healing or giving birth to a new life.
- Magnetic, powerful relationships.
- Complex research.

Opposition

- Power-hungry, destructive or violent feedback involving other's resources.
- Obsessive, possessive or extremist behavior.
- Jealous or cruelty
- Secretive or deceptive
- Overwhelming paranoia

Last Quarter Moon - Pisces

May 26, 2019 – 5° Pisces (12:34 pm) – square SU 5° Gemini



(USA – 4th House)

A need to resolve or release blocks in the relationship, leads to development of **maturity in personal character:**



- **Addressing loss - of taking responsibility for partners lack of resources requiring YOUR performance of daily services.**
- Letting go of unconscious attachment to others approval, values, resources, love – and/or income/intimacy tied to it.
- **Cultivating reformed IDEALS from PERSONAL SACRIFICE to PERSONAL HAPPINESS – by removing ‘controls of partners smothering routine’. Regenerate core ability to command your future, sort entangled beliefs, obtain PEACE.**

Reorientation.

To a situation that started on May 4th, 2019 – New Moon- (14° Taurus)

Crisis in consciousness, turning away old accomplishments and **following NEW inspirations and ideals.**

The Harvest of what was initiated from YOUR Partnerships. Public acceptance of creative mastery/expertise -- but was it at the expense of your own goals and dreams.

Fulfillment

- Security is found through **emotional intimacy.**
- **Adapting to emotional and soul learning opportunities**
- Imaginative. romantic, artistic, or spiritual ideals
- Compassion and healing

Opposition

- Could involve sacrifice, martyrdom or to ‘loose’ self-autonomy for others
- Acting on desire to escape or retreat from reality
- Confronting unrealistic, cloudy, secretive or self-destructive beliefs.
- Procrastination.

3 Planets Retrograde

Mars applying to oppose Jupiter May 5, 2019 –

*Culmination of growth and expansion, yet want to take on more!
Careful not to be overbearing - or to overextend yourself. Could be successful.*

Delay in Growth, to 'Determine' Life Plan

Jupiter (Rx April 10 - August 11) – 24° Sag » 14° Sag

- **A dilemma to resolve in the direction your expertise, goals or future is heading in** - And what you are sacrificing. Possibly going back to school, or solidifying your knowledge and beliefs. A holding pattern is in process for you to grow. your 'internal wisdom'.

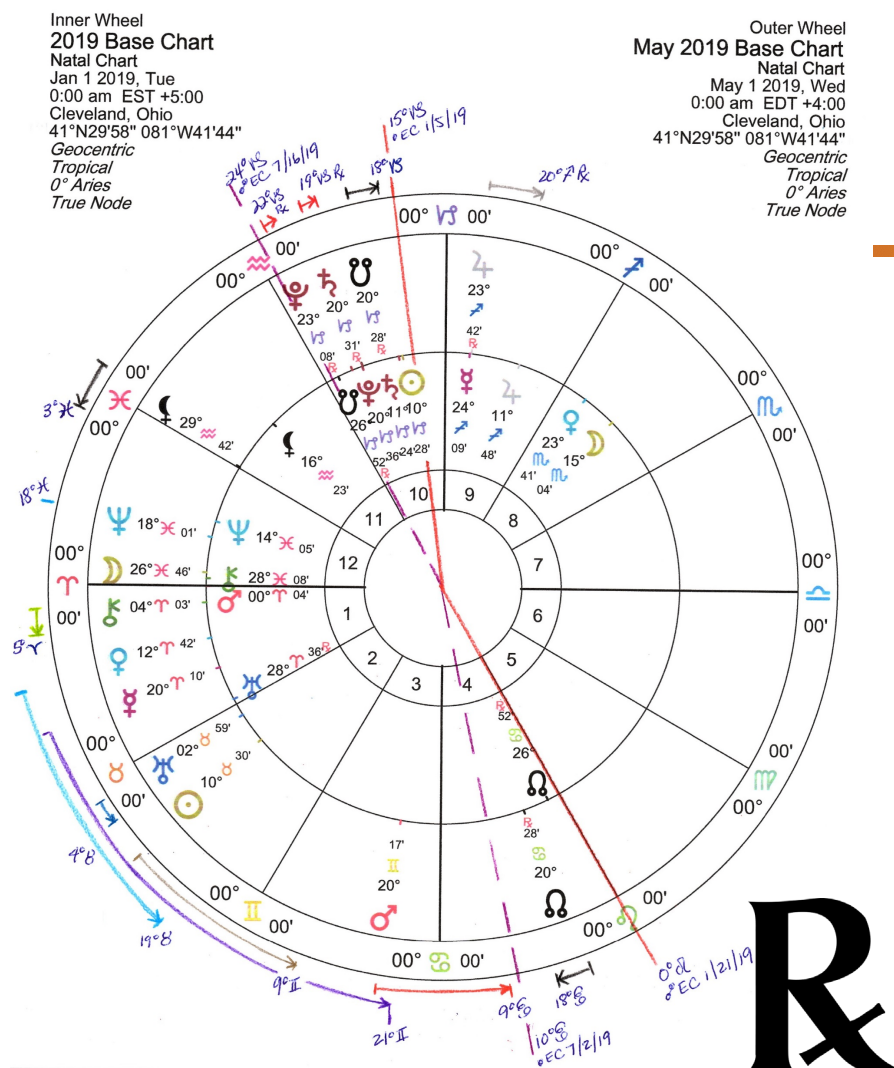
Pluto (Rx April 24 – Oct 2/3) – 23° Cap » 20° Cap

Crisis in consciousness – It's time to have a conversation with your soul. **Reorientation** – looking at your 'power and authority' in the external world. Are your efforts **inline with your soul inspirations?**

Saturn (Rx April 29 – Sept 18) – 20° Cap » 13° Cap

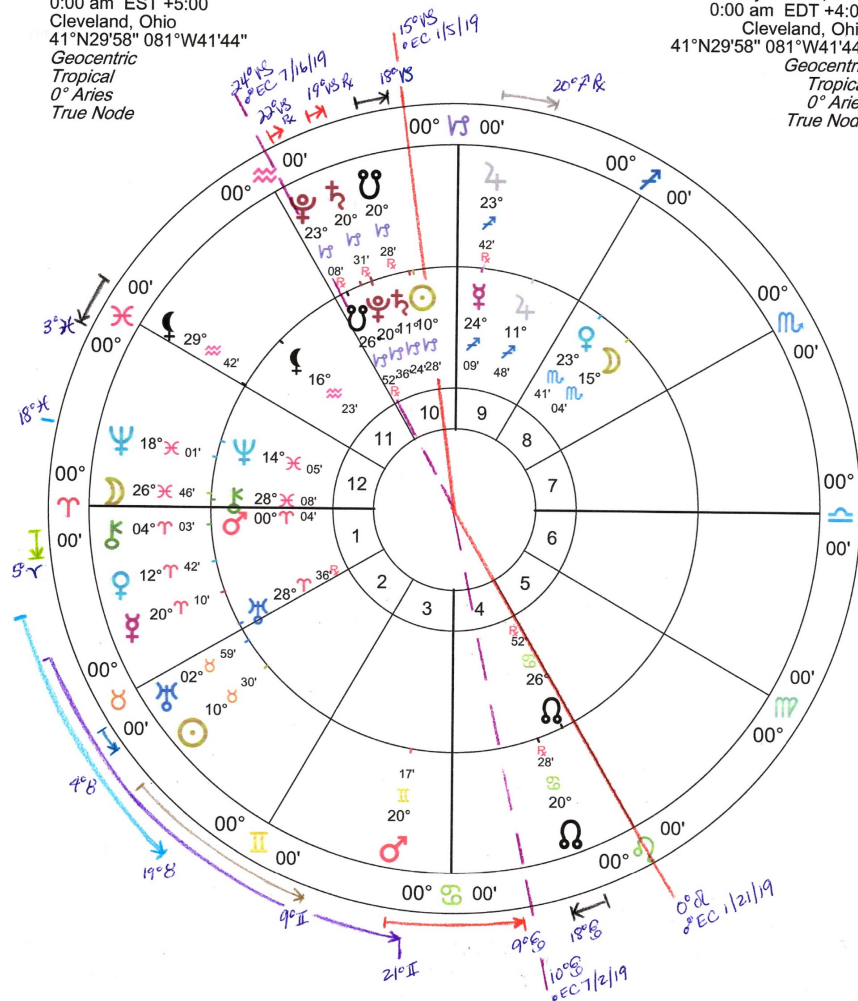
Realization that your 'reality', 'responsibility' and 'capacity to deal with limits' is stressing the core of your operation, emotions, home, or family. **Awareness** - internal changes are required – **Take the time to restructure your foundation and 'self authority'**. Dharma.

April 10 – Oct 2, 2019 (JU, SA, PL Retrograde)



Inner Wheel
2019 Base Chart
Natal Chart
Jan 1 2019, Tue
0:00 am EST +5:00
Cleveland, Ohio
41°N29'58" 081°W41'44"
Geocentric
Tropical
0° Aries
True Node

Outer Wheel
May 2019 Base Chart
Natal Chart
May 1 2019, Wed
0:00 am EDT +4:00
Cleveland, Ohio
41°N29'58" 081°W41'44"
Geocentric
Tropical
0° Aries
True Node



Past Responsibilities

Nodes in Can/Cap opp/conj with Saturn 20° Cap

Letting go of old structures to rebuild a NEW core operation



Release Fears - Build New Foundation

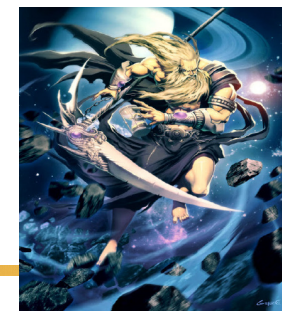
April 22- May 3rd (May 25th) and beyond

- **Overemphasis on your reputation, career, 'time' responsibilities of the past** – realizing the need to 'let go of outdated patterns'
- **Rebuild, integrate, and balance 'emotional' foundation within self, home, family structures for 'your future security'**
- **Your attention is on 'respect'**, how you are seen as a figurehead is changing. Rebranding your 'public image' - looking at your authority, accountability and dignity. Change the way you carry the weight...
- **Release fears**, conservative limitations or old professional alliances or duties that have been sources of respect in the past
- **Focus on 'feelings', 'stewardship' and 'going with the flow'** - with the public or family 'needs', vs 'enforcing strong hand of authority'.
- Bring balance of NEW experiences, intuition, sensitivity, or protective public appeal into your career or public image.
- Your karma is public, for all to see. Rewards in career, professional accomplishments along with great responsibilities vs public disgrace.

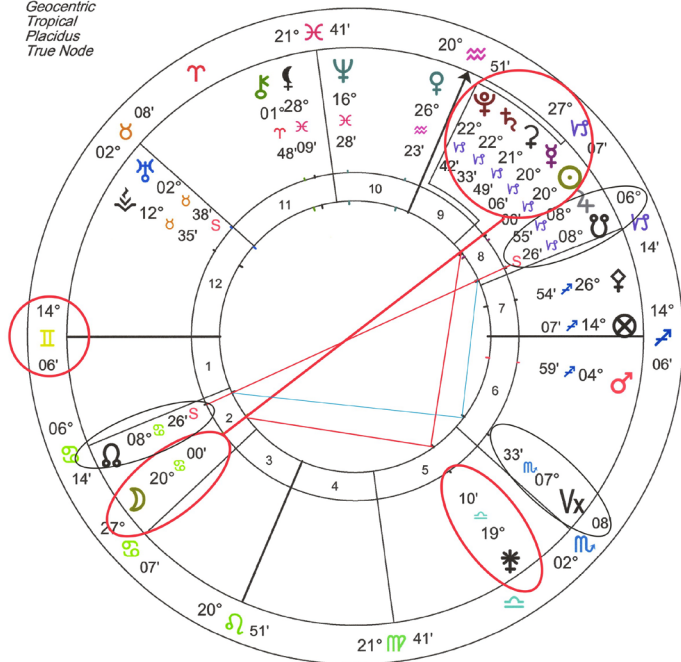


Saturn 20° Capricorn

April 5 – April 29th | RX: April 29 – May 25th | Dec 20 – Dec 28th, 2019



Jan 10, 2020 Solar Eclipse
Natal Chart
Jan 10 2020, Fri
2:22 pm EST +5:00
Washington, DC
38°N53'42" 077°W02'12"
Geocentric
Tropical
Placidus
True Node



Dec 26, 2019: Solar Eclipse 4° Capricorn – 3rd H – USA

Jan 10, 2020: Lunar Eclipse 20° Cancer – 2nd H – (op 8th H conj ME, SA, PL) USA

Theme: this family of eclipses brings in

- Sudden endings of associations or of a relationship, possibly with a younger person.
- A large emotional component.
- A sense of traumatic transformation, possibly through news received or short journeys undertaken.

Mars activates its expression early as of June 16-17, 2019 as it conjuncts (20° Cancer, along with a full moon) – until it's full awareness/opposition in March 17, of 2020.

Note> this eclipse is a repeat and the result of what was activated with the Solar Eclipse of July 13, 2018 (20:41° Cancer) | Oppose Pluto 20° Cap

Pluto RX – Direct 20° Cap: *August 25 - Nov 10, 2019 = Final decision has been made: Release of conservative 'patriarch' old methods of your identities expression. New 'soul empowered feminine 'protective stewardship' called into expression via full force. Death of old ways.*

Repetition – repeating/expanding upon eclipse 18 years ago...or same Saros Series:

- Dec 14, 2001 / Dec 30, 2001: United States September 11, 2001 Terrorist Attacks:
- Nov 1, 1929 / Nov 17, 1929: United States -- Wall Street Crash

Base Chart Jan 2019

Natal Chart

Jan 1 2019, Tue

0:00 am EST +5:00

Cleveland, Ohio

41°N29'58" 081°W41'44"

Geocentric

Tropical

0° Aries

True Node



2019 Look Ahead

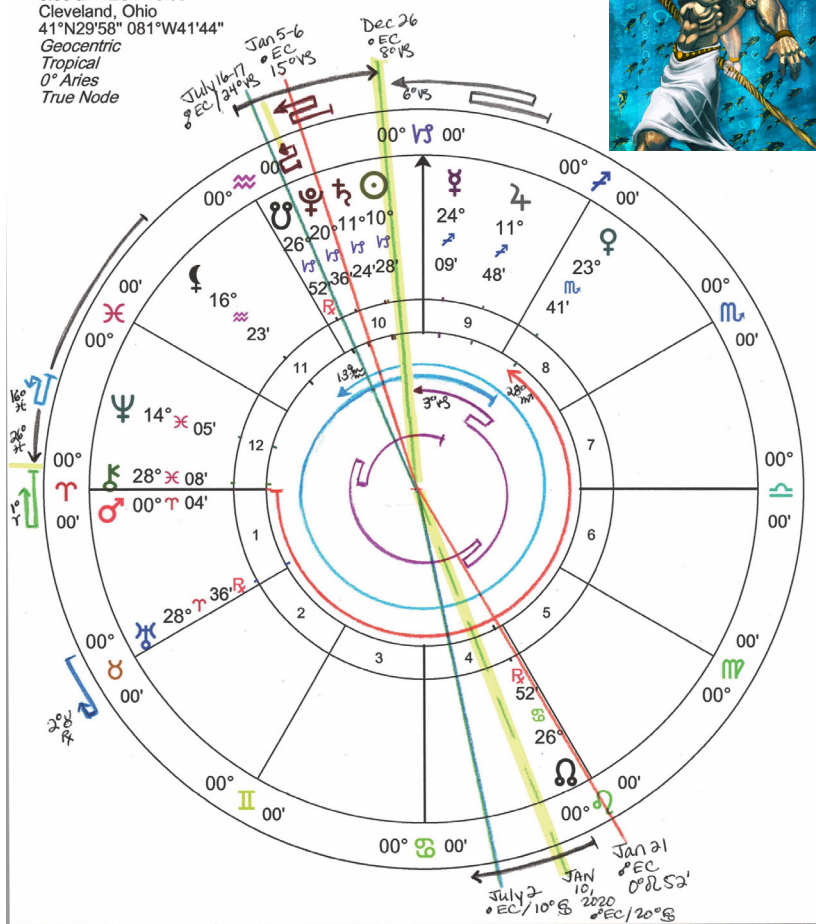
Nodes in Cancer/Capricorn – trine with Neptune May 17 - June 2, 2019 – Easily allowing Unity to Dissolve the Differences – for future outcome of your plans.

Transcend Outdated Patterns with Ease.

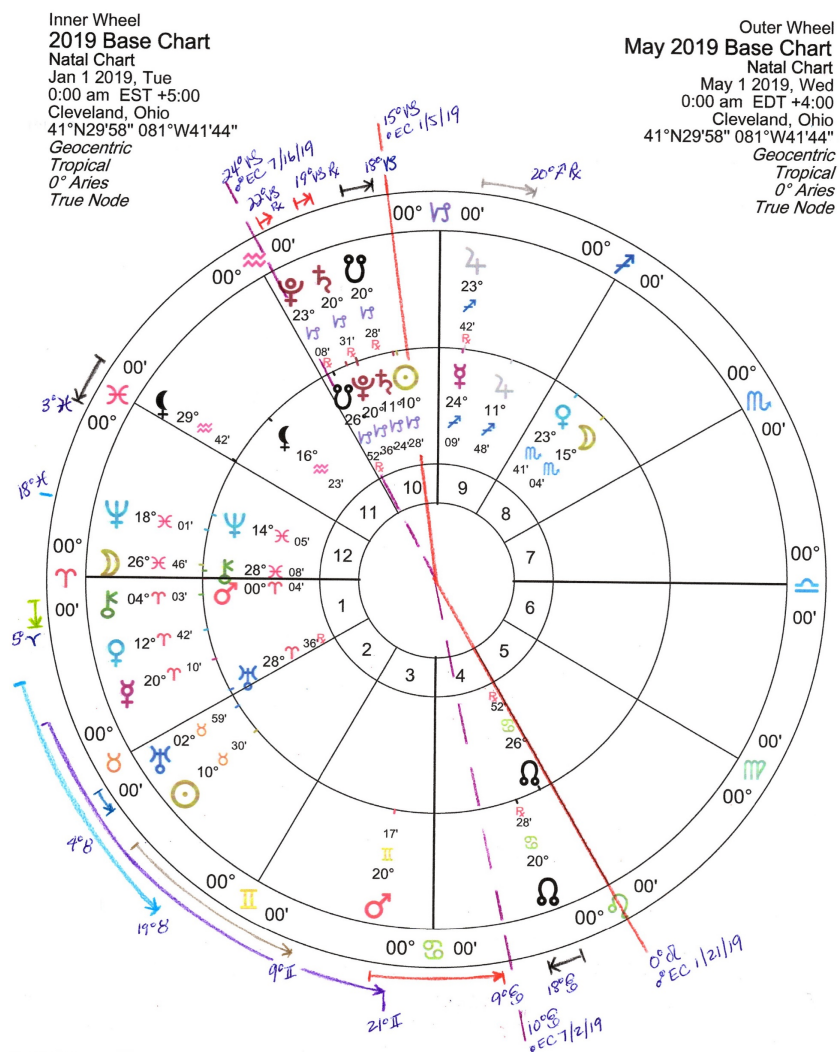
Neptune dissolving past fears, limitations and controls in Pisces

- It's time to make the transition from caterpillar into butterfly this year. Make the **SHIFT** from EGO into SOUL Authority!
- Healing: Redefining your root chakra with 'new vision' - laying a new foundation with mastery...dismissing false beliefs...claim your dream.
- **Open – expand – trust your intuition. It will take trust to align to the new reality.** Align to your higher purpose – for the greater good. Accept the new flow of 'unity' energy.
- **Ignore and let go of the patterns of the past. Let go of the 'old paradigms'** (You will not be fulfilled –serving the lower self – ego)
- **Heightened awakenings to new relationships of healing the 'self'.** Releasing those that are not 'honoring your authenticity'. No more guilt trips.
- *New experiences, new windows, new pathways to your soul.*

May 17 – June 2 | August 16-18 (trine NN 17° Can)



MAY Key Dates 2019



- May 1:** MA 20° Gem quincunx SA 20° Cap Rx
May 1: ME 21° Aries sextile MA 21° Gemini | ME 21° Aries square SA 21° Cap Rx
May 1-3: SA 20° Cap Rx conj SN 20° Cap | oppose NN 20° Cancer
May 1-25: SA 20° Cap Rx oppose SE 20° Cancer-2nd/8th H USA) – early activation
May 1-20: JU 23° Sag Rx semi-sextile PL 23-22° Cap Rx
May 1-22: CH 4° Ari square SE 4° Cap (USA 3rd H/ conj IC, JU, SN)–early activation
May 2: ME 23° Aries square PL 24° Cap Rx | ME 23° Aries trine JU 24° Sag Rx
May 4: New Moon 14° Taurus (6:46 pm) – USA 7th House
May 4-21: Liliith 0-1° Pisces quincunx LE 0:52 Leo (USA 10th/MC MO opp 4th/IC SU)
May 4-5: MA 23° Gem quincunx PL 23° Cap Rx | MA 23° Gem op JU 23° Sag Rx
May 6: ME enters Taurus 0°
May 7: VE 21° Aries square SA 21° Cap Rx
May 7: MA 24° Gem quincunx LE 24° Cap (USA 2nd/8th H)- early activation
May 8: ME 3° Taurus conjunct UR 3° Taurus | SU 18° Tau sextile NE 18° Pisces
May 9: VE 23° Aries trine JU 23° Sagittarius Rx | VE 23° Aries sq PL 23° Cap Rx
May 11: 1st Quarter Moon 21° Leo (9:12 pm) – sq SU 21° Taurus
May 11: SU 20° Tau trine SA 20° Cap Rx
May 13: SU 23° Tau trine PL 23° Cap Rx
May 14: VE 24° Ari sextile MA 24° Gem | sq/quincx LE 24° Cap (USA 2nd/8th H)
May 15: VE enters Tau 0° | ME 18° Tau sextile NE 18° Pis | MA enters Cancer 0°
May 16: ME 20° Tau trine SA 20° Cap Rx
May 16-18: MA 0-1° Can semi-sextile LE 0:52 Leo (USA 10th/MC MO oppose 4th/IC SU)
May 17-31: NE 18° Pisces trine NN 18° Cancer
May 18: ME 23° Tau trine PL 23° Cap Rx | VE 4° Taurus conjunct UR 4° Taurus
May 18: Full Moon (Blue Moon) 27° Scorpio (5:11 pm) – opp SU 27° Taurus
May 19-31: UR 4° Tau sextile SE 4° Cap (USA 3rd H/ conj IC, JU, SN) – early activation
May 21: SU enters Gem 0° | ME enters Gem 0° | SU 0° Gem conj ME 0° Gem
May 22-23: MA 4° Can sext UR 4° Tau opp/tri SE 4° Cap (USA 3rd H/ conj IC, JU, SN)
May 26: 3rd Quarter Moon 5° Pisces (12:34 pm) – sq SU 5° Gemini
May 29: SU 8° Gemini square NE 18° Pisces
May 30: VE 19° Tau sextile NE 19° Pisces | ME 21° Gem oppose JU 21° Sag Rx
May 31: VE 20° Tau trine SA 20° Cap Rx | sex/op SE 20° Cancer-2nd/8th H USA)